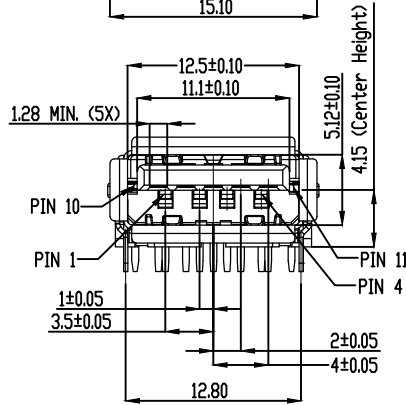
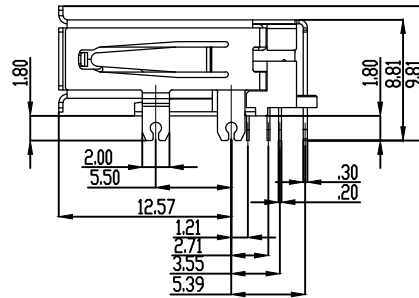


TOLERANCE:  $\pm 0.05$ , THICKNESS=1.60mm  
RECOMMENDED PCB LAYOUT  
(TOP VIEW)



### SPECIFICATIONS

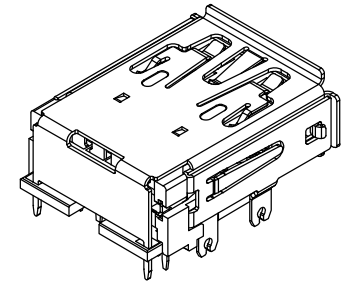
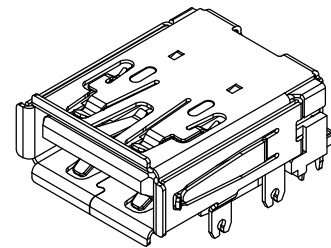
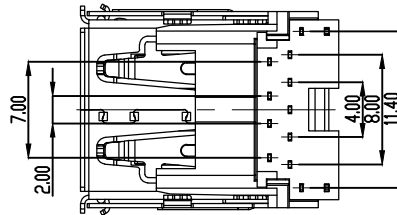
- Current Rating: 5 Amps
- Contact Resistance: 30 Megohms initial for Vbus & GND Contacts  
50 Megohms initial for All Other Contacts
- Insulator Resistance: 100 Megohms Min @ 100 DAC
- Voltage Rating: 20V
- Dielectric withstanding: 100V AC
- Operating Temperature:  $-25^{\circ}\text{C} \sim +105^{\circ}\text{C}$
- Mating Cycle: 5000
- Contacts: Copper Alloy
- Shell: Steel
- Under plate: 80u" Nickel
- Solder Tail Area: 100u"~200u" Tin (Lead Free)
- Contact Area: 30u" Pd-Ni+2u" Gold
- Insulator Material: Thermoplastic, UL 94V-0

BPA-PD 09 F VZ T P X A XX FG  
1 2 3 4 5 6 7 8 9 10

- 1.SERIES NO.  
BPA-PD=USB 3.1
- 2.CONTACT NUMBER:  
09=9 PINS
- 3.CONTACT TYPE:  
F=FEMALE
- 4.CONTACT AREA PLATING:  
VZ=30u" Pd-Ni+2u" Gold
- 5.SOLDER TAILS AREA PLATING:  
T=100u"~200u" Tin (Lead Free)
- 6.SHELL PLATING:  
P=80u" Nickel
- 7.SHELL LOGO:  
0=W/O Logo  
1=W/Logo
- 8.PACKING STYLE:  
A=TRAY
- 9.INSULATOR COLOR:  
3=Blue  
3C=Blue+Date Code
- 10.Green Option:  
FG=RoHS Compliant  
(Halogen Free)

### Pin Assignments

Pin Number	Signal Name
1	VBUS
2	D-
3	D+
4	GND
5	StdA_SSRX-
6	StdA_SSRX+
7	GND_DRAIN
8	StdA_SSTX-
9	StdA_SSTX+
10	PD DETECT
11	INSERTION DETECT
12	SHELL(Shield)
13	SHELL(Shield)



APTOS Technology CONFIDENTIAL  
This document, and all information it contains, are the confidential, proprietary property of APTOS Technology. Disclosure, duplication or distribution of this document, or any information it contains, in whole or part, without prior written permission from APTOS Technology is strictly prohibited

GENERAL TOLERANCE UNLESS OTHERWISE SPECIFIED	
XXX. ± X	.XX ± 0.10
XX. ± X	.XXX ± X
X. ± 0.50	X.' ± 1"
.X ± 0.30	.X' ± X"

REV. A	DRAWN	09/15/09
DATE 09/15/09	CHECKED	
SCALE As shown	APPROVED	
UNIT mm		SIZE A4

**APTOS TECHNOLOGY**

BPA-PD Series  
USB 3.1 (Center Height 4.15)  
PRODUCT NO. BPA-PD09FVZTPXAXX-FG  
FILE NAME: BPA-PD09FVZTPXAXX-FG.dwg